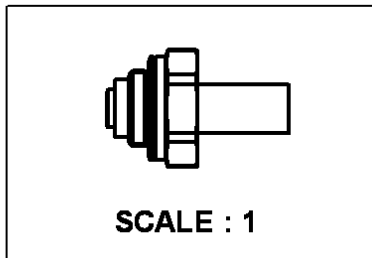
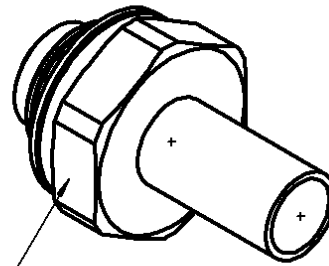
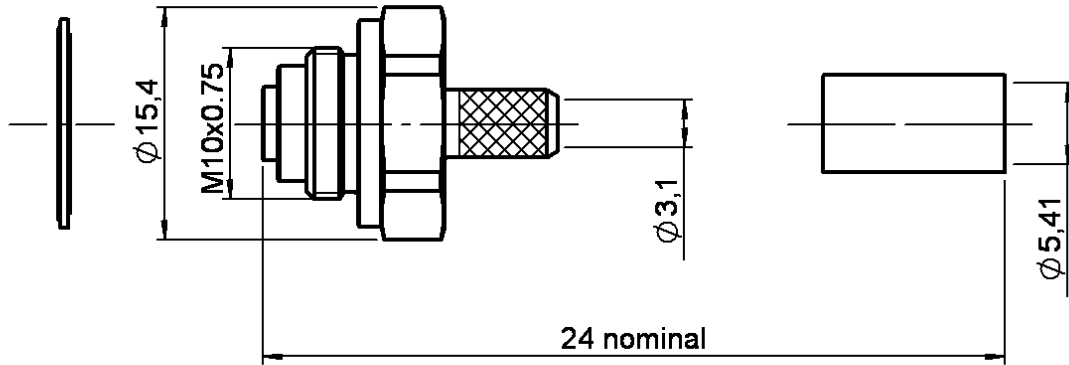


COAXI-KIT TIP CRIMP TYPE

R280.651.030

CABLE 5/50 S

Series : ACC-COAX



All dimensions are in mm.



COMPONENTS	MATERIALS	PLATINGS (μm)
BODY	BRASS	BBR 0.5 OVER SILVER 3
CENTER CONTACT	-	-
OUTER CONTACT	-	-
INSULATOR	-	-
GASKET	COPPER	-
OTHERS PARTS	BRASS	BBR 2
-	-	-
-	-	-

Issue : 0218 B

In the effort to improve our products, we reserve the right to make changes judged to be necessary



COAXI-KIT TIP CRIMP TYPE

R280.651.030

CABLE 5/50 S

Series : ACC-COAX

PACKAGING

Standard	Unit	Other
20	'W' option	Contact us

SPECIFICATION

CABLE ASSEMBLY

Stripping	a	b	c	d	e	f
mm	3.00	8.00	23.5	0.00	20.5	0.00

ELECTRICAL CHARACTERISTICS

Impedance	NA	Ω
Frequency	NA	GHz
VSWR	NA + 0.000	x F(GHz) Maxi
Insertion loss	NA	\sqrt{F} (GHz) dB Maxi
RF leakage	NA - (F(GHz)) dB mini
Voltage rating	NA	Veff Maxi
Dielectric withstanding voltage	NA	Veff mini
Insulation resistance	NA	M Ω mini

Assembly instruction :

Recommended cable(s)
 RG 141
 KX 15
 RG 58

MECHANICAL CHARACTERISTICS

Recommended torque		
Panel nut	NA	N.cm
Clamp nut	NA	N.cm
A/F clamp nut	0.000	mm
Mating life	0	Cycles mini
Weight	11.560	g

Cable retention

- pull off **150** N mini
 - torque **NA** N.cm

TOOLING

Part Number	Description	Hexagon
.	.	.
R282.223.000	CRIMPING TOOL	Hex : 5.41
R282.235.011	CRIMPING DIES	Hex : 5.41
R282.293.000	CRIMPING TOOL	
R282.303.220	TORQUE SPANNER .708 in 84.075 in.lb	

OTHERS CHARACTERISTICS

-

ENVIRONMENTAL

Operating temperature	-55/+155	$^{\circ}$ C
Panel leakage	NA	

Issue : 0218 B

In the effort to improve our products, we reserve the right to make changes judged to be necessary

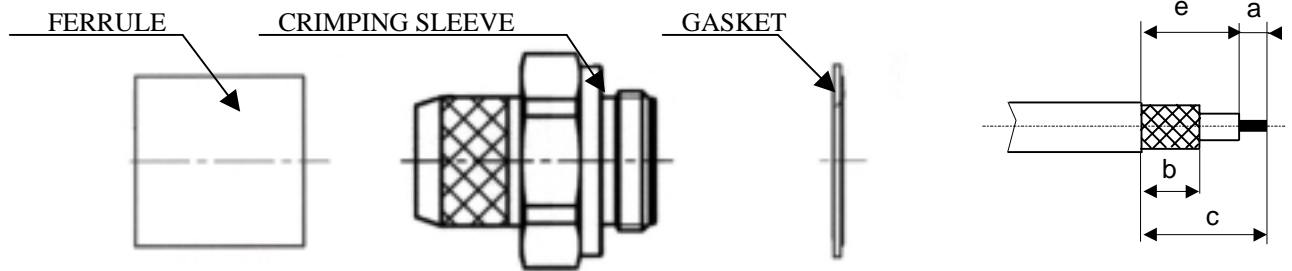


COAXI-KIT TIP CRIMP TYPE

CABLE 5/50 S

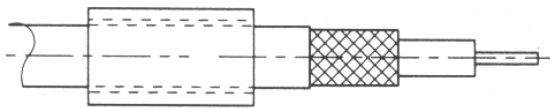
R280.651.030

Series : ACC-COAX



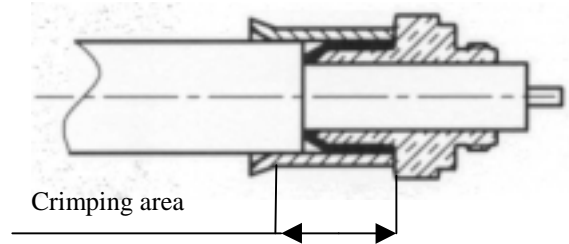
1

Glisser sur le cable la ferrule.
Strip the cable .;



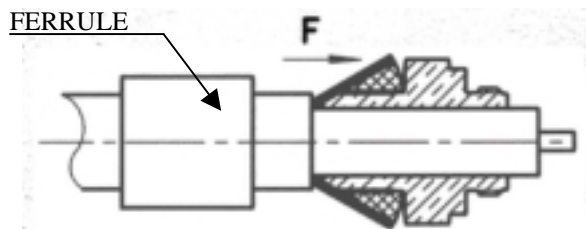
3

Crimp the ferrule with crimping tool .



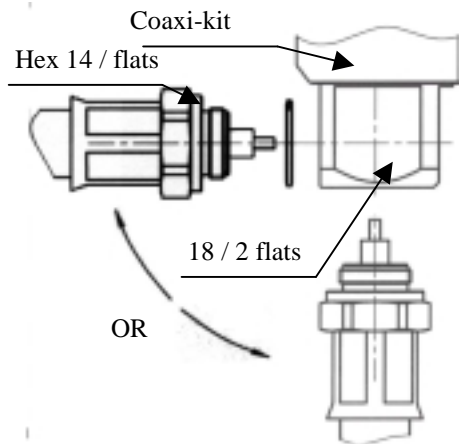
2

Fan the braid .
Push the sleeve under the braid ..
Slide the ferrule over the braid .
(in direction F)



4

Mount the metallic gasket onto the crimping sleeve ..
Screw the combi-head on the cable sub-assembly ..
Recommended coupling torque : 84.07inc.lb



Issue : 0218 B

In the effort to improve our products, we reserve the right to make changes judged to be necessary



COAXI-KIT TIP CRIMP TYPE

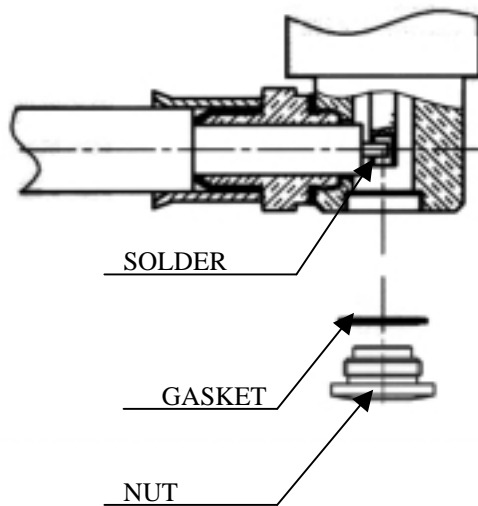
CABLE 5/50 S

R280.651.030

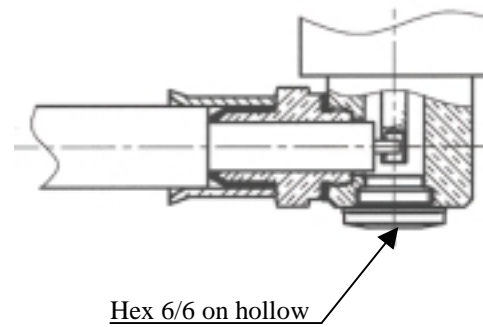
Series : ACC-COAX

5

Solder the inner conductor onto the coaxi-kit centre contact .

**6**

Screw the nut with the gasket in the body of connector.

**Issue : 0218 B**

In the effort to improve our products, we reserve the right to make changes judged to be necessary